

Zebron® GC Columns



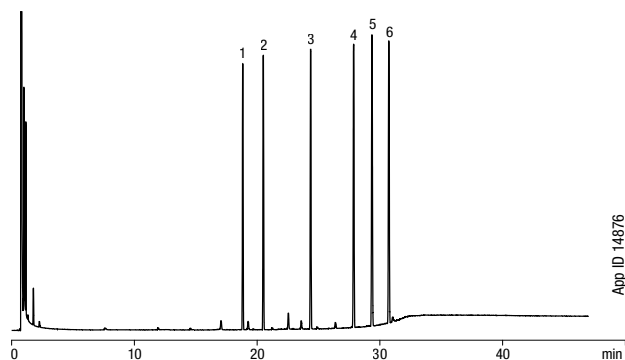
ZB-5

- Rugged, versatile low polarity column for general lab purpose
- Resilient to dirty samples—long column life
- Low bleed (MS Certified) especially suited to high sensitivity work using GC/MS
- Extremely inert for active compounds such as drugs or pesticides
- Great column for unknown samples
- Equivalent to USP Phase G27
- Temperature Limits: -60 to 360/370 °C (Isothermal/TPGC)*

Alternative to Any 5%-Phenyl-95%-Dimethylpolysiloxane Phase:

• DB-5	• MDN-5	• 007-5	• BP5	• HP-5 Trace Analysis
• HP-5	• Equity-5	• AT-5	• Ultra 2	
• Rtx-5	• SPB-5	• BPX5	• EC-5	• CP-SIL 8 CB
• HP-PAS-5	• OV-5	• SE-54		

Phthalate Esters: EPA Method 606



Column: Zebron ZB-5
Dimensions: 30 meter x 0.53 mm x 1.50 µm
Part No.: 7HK-G002-28
Injection: Split 20:1 @ 300 °C, 1 µL
Carrier Gas: Helium @ 12.9 mL/min (constant flow)
Oven Program: 40 °C for 6 min to 300 °C @ 10 °C/min for 15 min
Detector: FID @ 300 °C
Sample:

1. Dimethyl Phthalate
2. Diethyl Phthalate
3. Di-n-butyl Phthalate
4. Butyl Benzyl Phthalate
5. Bis(2-ethylhexyl) Phthalate
6. Di-n-octyl Phthalate



For ultra low bleed, consider using a ZB-5ms, see p. 108
For high temperature analysis, consider using a ZB-5HT, see p. 109



*Thicker films (≥1.0 µm df) are rated to 340/360 °C (Isothermal/TPGC).

Contact Phenomenex or your local Phenomenex distributor for additional GC products and applications.



Extend column lifetime. Add a Z-guard to your next Zebron GC order.

Column Profile

Low High

Polarity 8

Bleed

Temperature Limits

Stability

Applications

- Alkaloids
- Dioxins
- Drugs
- Essential Oils/Flavors
- FAMES
- Halo-hydrocarbons
- PCBs/Aroclors
- Pesticides/Herbicides
- Phenols
- Residual Solvents
- Semi-volatiles

Ordering Information

Zebron ZB-5 GC Columns

ID(mm)	df(µm)	Temp. Limits °C	Part No.	Price
15-Meter				
0.25	0.10	-60 to 360/370	7EG-G002-02	
0.25	0.25	-60 to 360/370	7EG-G002-11	
0.25	0.50	-60 to 360/370	7EG-G002-17	
0.25	1.00	-60 to 340/360	7EG-G002-22	
0.32	0.10	-60 to 360/370	7EM-G002-02	
0.32	0.25	-60 to 360/370	7EM-G002-11	
0.32	1.00	-60 to 340/360	7EM-G002-22	
0.53	0.50	-60 to 360/370	7EK-G002-17	
0.53	1.50	-60 to 340/360	7EK-G002-28	
0.53	3.00	-60 to 340/360	7EK-G002-36	
20-Meter				
0.18	0.18	-60 to 360/370	7FD-G002-08	
30-Meter				
0.25	0.10	-60 to 360/370	7HG-G002-02	
0.25	0.25	-60 to 360/370	7HG-G002-11	
0.25	0.50	-60 to 360/370	7HG-G002-17	
0.25	1.00	-60 to 340/360	7HG-G002-22	
0.32	0.25	-60 to 360/370	7HM-G002-11	
0.32	0.50	-60 to 360/370	7HM-G002-17	
0.32	1.00	-60 to 340/360	7HM-G002-22	
0.53	0.50	-60 to 360/370	7HK-G002-17	
0.53	1.50	-60 to 340/360	7HK-G002-28	
0.53	3.00	-60 to 340/360	7HK-G002-36	
0.53	5.00	-60 to 340/360	7HK-G002-39	
60-Meter				
0.25	0.10	-60 to 360/370	7KG-G002-02	
0.25	0.25	-60 to 360/370	7KG-G002-11	
0.25	0.50	-60 to 360/370	7KG-G002-17	
0.25	1.00	-60 to 340/360	7KG-G002-22	
0.32	0.25	-60 to 360/370	7KM-G002-11	
0.32	1.00	-60 to 340/360	7KM-G002-22	
0.53	1.50	-60 to 340/360	7KK-G002-28	

Note: If you need a 5 in. cage, simply add a (-B) after the part number, e.g., 7HG-G002-11-B. Some exceptions may apply. Agilent 6850 and some SRI and process GC systems use only 5 in. cages. See p. 91.



ZB-5 Test Mix Part No.: AG0-5155
Price:

