

ZB-XLB

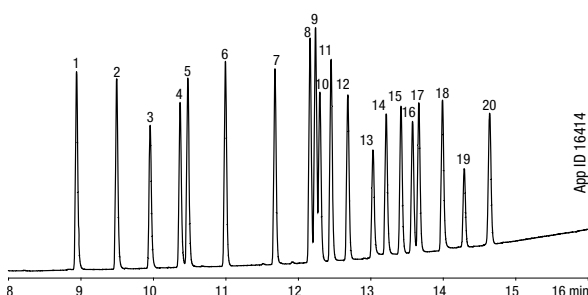
- Unique, low polarity si-arylene column
- Engineered specifically for use with bleed sensitive detectors such as MS
- Provides alternate selectivity to standard 5-type phases
- Often used for confirmation of pesticides, PCBs, or other environmental samples
- Good tool for sample screening to identify unknown contaminants
- Temperature Limits: 30 to 340/360 °C (Isothermal/TPGC)*

Similar* to:

- MDN-12
- DB-XLB
- Rtx-XLB

*not exact equivalent, selectivity might be different

Chlorinated Pesticides: EPA Method 8081A



Column: Zebtron ZB-XLB

Dimensions: 30 meter x 0.25 mm x 0.25 µm

Part No.: 7HG-G019-11

Injection: Split 111:1 @ 250 °C, 1.5 µL

Carrier Gas: Helium @ 0.9 mL/min (constant flow)

Oven Program: 110 °C to 320 °C at 15 °C/min and hold until last peak elutes

Detector: ECD @ 350 °C

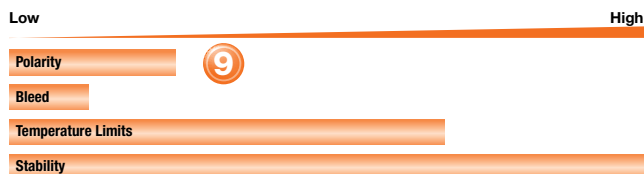
Sample:

1. α-BHC
2. γ-BHC
3. β-BHC
4. δ-BHC
5. Heptachlor
6. Aldrin
7. Heptachlor epoxide
8. γ-Chlordane
9. α-Chlordane
10. Endosulfan I
11. 4,4'-DDE
12. Dieldrin
13. Endrin
14. 4,4'-DDD
15. Endosulfan II
16. Endrin aldehyde
17. 4,4'-DDT
18. Endosulfan sulfate
19. Methoxychlor
20. Endrin ketone

App ID 16414

If Zebtron columns do not provide you with equivalent or better separations as compared to any other GC column of the same phase and comparable dimensions, return the column with comparative data within 45 days for a FULL REFUND.

Column Profile



Applications

- Polychlorinated Biphenyls (PCBs)
- Pesticides
- Herbicides
- Aroclors

Ordering Information

Zebtron ZB-XLB GC Columns

ID(mm)	df(µm)	Temp. Limits °C	Part No.	Price
10-Meter				
0.18	0.18	30 to 340/360	7CD-G019-08	
15-Meter				
0.25	0.25	30 to 340/360	7EG-G019-11	
20-Meter				
0.18	0.18	30 to 340/360	7FD-G019-08	
30-Meter				
0.25	0.25	30 to 340/360	7HG-G019-11	
0.25	0.50	30 to 340/360	7HG-G019-17	
0.32	0.25	30 to 340/360	7HM-G019-11	
0.32	0.50	30 to 340/360	7HM-G019-17	
0.53	1.50	30 to 320/340	7HK-G019-28	
60-Meter				
0.25	0.25	30 to 340/360	7KG-G019-11	

Note: If you need a 5 in. cage, simply add a (-B) after the part number, e.g., 7HG-G019-11-B. Some exceptions may apply. Agilent 6850 and some SRI and process GC systems use only 5 in. cages. See p. 91.



ZB-XLB Test Mix Part No.: AGO-7578
Price:



*Thicker films ($\geq 1.0 \mu\text{m}$ df) are rated to 320/340 °C (Isothermal/TPGC).

Contact Phenomenex or your local Phenomenex distributor for additional GC products and applications.



Extend column lifetime. Add a Z-guard to your next Zebtron GC order.